

NAME

DATE

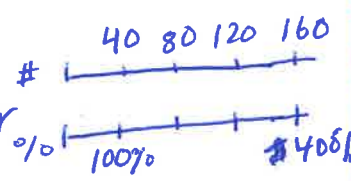
PERIOD

Unit 3, Lesson 14: Solving Percentage Problems

1. For each problem, explain or show your reasoning.

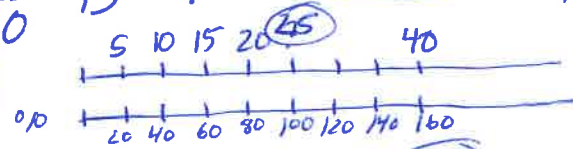
a. 160 is what percentage of 40?

$\frac{160}{40}$ is 4 so 400% or



b. 40 is 160% of what number?

25



$40 \div 8 = 5$
 $160 \div 8 = 20$

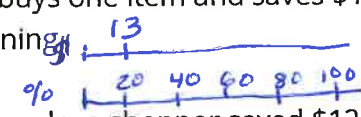
c. What number is 40% of 160?

10% is 16 so $4 \times 16 = 64$

13

2. A store is having a 20%-off sale on all merchandise. If Mai buys one item and saves \$13, what was the original price of her purchase? Explain or show your reasoning.

20% is $\frac{1}{5}$ so $13 \times 5 = \$65$



3. The original price of a scarf was \$16. During a store-closing sale, a shopper saved \$12 on the scarf. What percentage discount did she receive? Explain or show your reasoning.

75% $\frac{\$12 \text{ saved}}{\$16 \text{ whole}}$

mental $\frac{1}{4}$ of 16 is \$4 and $4 \times 3 = \$12$

4. Select **all** the expressions whose value is larger than 100.

- A. 120% of 100
- B. 50% of 150
- C. 150% of 50
- D. 20% of 800
- E. 200% of 30
- F. 500% of 400
- G. 1% of 1,000

13

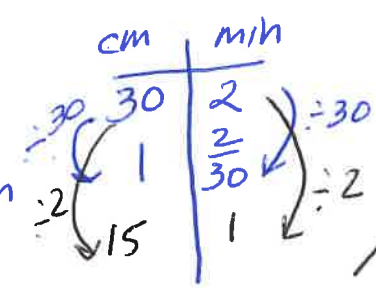
5. An ant travels at a constant rate of 30 cm every 2 minutes.

a. At what pace does the ant travel per centimeter?

$\frac{2}{30} = \frac{1}{15}$ min

b. At what speed does the ant travel per minute?

15 cm



12

(from Unit 3, Lesson 8)

NAME _____

DATE _____

PERIOD _____

6. Is $3\frac{1}{2}$ cups more or less than 1 liter? Explain or show your reasoning. (Note: 1 cup \approx 236.6 milliliters)

Less

$828.1 \text{ mL} < 1000 \text{ mL}$
in a Liter

C	ML
1	236.6
$3\frac{1}{2}$	828.1

$\times 3\frac{1}{2}$ (on C) $\times 3\frac{1}{2}$ (on ML)

1

(from Unit 3, Lesson 4)

7. Name a unit of measurement that is about the same size as each object. — more

than one right answer possible for some 😊

- a. The distance of a doorknob from the floor is about 1 yard or meter
- b. The thickness of a fingernail is about 1 mm.
- c. The volume of a drop of honey is about 1 mL.
- d. The weight or mass of a pineapple is about 1 pound or kilogram
- e. The thickness of a picture book is about 1 inch or centimeter
- f. The weight or mass of a buffalo is about 1 ton.
- g. The volume of a flower vase is about 1 cup, quart, liter
- h. The weight or mass of 20 staples is about 1 gram
- i. The volume of a melon is about 1 quart, gallon
- j. The length of a piece of printer paper is about 1 foot.

10

(from Unit 3, Lesson 2)

21

3.